

*Ice
Theatre
of
New York*



2008 Ice Theatre Benefit Gala
Honoring Nancy Kerrigan
Ice Angel Award to Joan Erdheim
October 27, 2008

Sky Rink at Chelsea Piers | Pier 61 | 23rd Street & the Hudson River

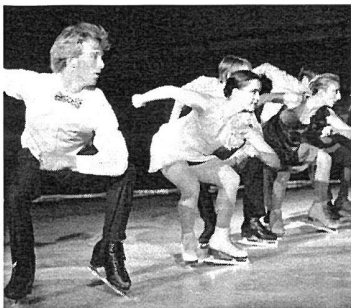
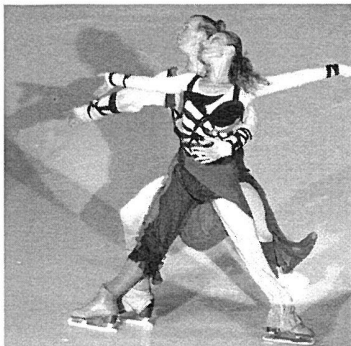


Photo: Arthur Donowski

*Ice
Theatre
of
New York*



Photos: Olivier Brajon

Ice Theatre of New York (ITNY) is an extraordinary organization, which has, for more than 20 years, changed the face of figure skating by integrating the sensibilities of the contemporary dance, music and art worlds into performance skating.

Founded in 1984 by Moira North, Ice Theatre of New York is the nation's first not-for-profit ice dancing ensemble to be awarded grants as a dance company by the National Endowment for the Arts, the New York State Council on the Arts and the New York City Department of Cultural Affairs.

In addition to pioneering skating as a performing art, Ice Theatre has also developed diverse performance programs to develop ensemble skaters and educational outreach programs to teach the basics of skating and develop new audiences for dancing on ice.

During the upcoming 2008-2009 season, ITNY plans to expand its premier outreach program, the New Works and Young Artist Series, to Brooklyn and Queens in addition to the original series at Riverbank State Park in Manhattan. This program is dedicated to presenting new works and providing free skating clinics for public school students from Harlem and Washington Heights.

Ice Theatre will again collaborate with both dance and ice choreographers to create diverse new works and will continue its free public Concert Series at Rockefeller Center and The Pond at Bryant Park. The Company looks forward with great excitement to returning to France this winter and to its upcoming landmark 25th anniversary in 2010.

"Institutions like [Ice Theatre] are responsible for giving New York City the unparalleled artistic and cultural spirit that has made it the envy of the world."

— Vartan Gregorian,

President of The Carnegie Corporation of New York, June 2007

"ITNY has changed the face of figure skating by integrating the sensibilities of the contemporary dance, music and art worlds into their work on ice... It's a New York experience that's not to be missed."

— Hot Pick from the Arts and Business Council

*Ice
Theatre
of
New York*

2008 Ice Theatre Benefit Gala

Honoring Nancy Kerrigan
Ice Angel Award to Joan Erdheim

Monday, October 27, 2008 at 7pm

ARTISTIC DIRECTOR/FOUNDER

Moira North

ENSEMBLE DIRECTOR

Douglas Webster

EXECUTIVE DIRECTOR

Jirina Ribbens

PRODUCTION ASSOCIATE

Aretha Aoki

THE ENSEMBLE

Elisa Angeli, Darlin Baker, Joel Dear,
Tyrrell Gene, Nicolette Amie House,
Jamie Coffey Reynolds, Alyssa Stith, Douglas Webster

WITH

Surya Bonaly
Derrick Delmore

LIGHTING DESIGNER

Chenault Spence

PRODUCTION MANAGER

Carrie Dell Furray

GALA SKATING PROGRAM

(program subject to change)

APPALACHIA WALTZ

Choreography by JoAnna Mendl Shaw and Douglas Webster

Costumes by Elisa Metrevelli

Music by Yo-Yo Ma, Edgar Meyer & Mark O'Connor

Performed by Elisa Angeli, Darlin Baker, Joel Dear, Tyrrell Gene,

Jamie Coffey Reynolds, Douglas Webster

Commissioned by Ice Theatre of New York

SOLO

Surya Bonaly

SOLO

Derrick Delmore

LOW DUET

Choreography by Susan Marshall

Costumes by Mary Kokie McNaugher

Performed by Jamie Coffey Reynolds, Alyssa Stith

Susan Marshall's dance work for stage often involves natural gesture and a kind of organic partnering in which the effort and weight of the couple's interactions are allowed to be part of the content of the work,

and therefore are not disguised.

Commissioned by New York State Council on the Arts

SOLO

Surya Bonaly

SKATER'S SWINGTIME WALTZ

Choreography by Douglas Webster

Costumes by Kate McDowell Patterson

Music by Bob Crosby

Performed by Elisa Angeli, Darlin Baker, Joel Dear,

Nicolette Amie House, Tyrrell Gene, Douglas Webster

Commissioned by Ice Theatre of New York

FOOTLOOSE ON ICE FINALE

Music by Kenny Loggins

Performed by the Ice Theatre Ensemble: Elisa Angeli, Darlin Baker,

Joel Dear, Nicolette Amie House, Tyrrell Gene,

Jamie Coffey Reynolds, Alyssa Stith, Douglas Webster

Joined by performers from Ice Theatre Too!: Melody Champion, Philip Chang,

Angela Chiang, Marni Halasa, Bridie Myles, Elana Spiegel, Greg Wittrock

This program is supported, in part, by public funds from
the New York City Department of Cultural Affairs

ABOUT THE ARTISTS

ELISA ANGELI (Performer) Born in Milan, Italy, Elisa has skated since she was 6 years old. She initially skated freestyle and then turned to ice dancing. Elisa represented Italy in senior ice dancing from 1998 to 2001. She won a bronze medal at the Italian National Championship in 1999-2000 and placed 3rd at European Cup in Tallinn in February of 2000. Following her competitive career she skated in shows choreographed by Italian Champion Barbara Fusarpoli as well as other performances in Italy and around Europe. Elisa started performing with Ice Theatre in the 2005-2006 season.

ARETHA AOKI (Production Associate) recently completed her MFA at Smith College in choreography and production. She is very excited to be working for Ice Theatre and to be living and dancing in New York City.

DARLIN BAKER (Performer) has performed around the world. She was a featured artist in Disney's "Champions on Ice" with Scott Hamilton, and Nancy Kerrigan's "Halloween on Ice". She also toured with Phillip Candellero's Winter Tour. She has been a principle soloist in the Sun Valley Ice shows for 16 years, and is the choreographer of the Sun Valley Ice Show Children's Ensemble Number. She is a USFS Double Gold Medalist and International Medalist in Dance. Darlin is delighted to join the Ice Theatre ensemble this season.

SURYA BONALY (Guest Artist) native of southern France, Surya Bonaly has won over American fans for her exuberance and style. Surya is a powerful skater and is one of the few women to perform back flips. Not to mention, she is the only skater to land back flips on one foot. She has won 9 French National Championship titles, 5 European Championships titles and is a 3-time World Silver Medalist. For over ten years, she toured with Champions on Ice and she continues to perform all around the world. Although Surya competed for France, she now calls Las Vegas home and she became an American citizen in 2004.

JOEL DEAR (Performer) based out of Traverse City, Michigan, began skating in elementary school when a section of the school playground flooded and froze over. He began group lessons shortly after at a local ice rink and quickly fell in love with figure skating. Now, Joel is a two-time US National and International Medalist, and a 4-time US Figure Skating team member. While training in Boston he joined modern dance company Anna Myer and Dancers as well as a Jazz and Hip Hop based community dance project, The Rainbow Tribe, for whom he is scheduled to choreograph a modern piece for this winter. Joel maintains a busy schedule doing skating and dance shows as well as choreographing for various dance companies and competitive figure skaters around the country. Joel joined the cast of Ice Theatre of New York in spring of 08 for the French tour. He is excited to be back in New York for his first gala season performances.

CARRIE DELL FURAY (Production Manager) is delighted to return to Ice Theatre after spending the last two years at sea as Senior Production Manager for Princess Cruises. Now a full-time resident of New York, Furay has worked with Ice Theatre since 2001 on projects such as Fashions on Ice, Dance Visions on Ice, and 2004's Gala and Home Show. She would like to thank Moira and Jirina for their continuing dedication to this wonderful company.

DERRICK DELMORE (Guest Artist) is a former National Collegiate, Olympic Festival, and World Junior Champion. He has competed at 18 consecutive U.S. Nationals, and has been a member of the U.S. International Team for 14 straight years. Last year, he co-starred in the Broadway-bound musical *Cold as Ice* alongside Olympic Champion Oksana Baiul. He is currently training in pairs and will make his competitive debut with partner Kelcie Lee at the Pacific Coast Sectional Championships this fall. Derrick resides in Los Angeles, California, where he trains and coaches skaters of all levels. He also holds Bachelor Degrees in psychology and communications from Stanford University. Derrick was also a competitive classical pianist in his early years, and earned the Paderewski medal for 10 years of playing at the national level.

TYRRELL GENE (Performer) started dancing at the age of three in his hometown of Wenatchee, WA. Dancing, which was initially a form of therapy for his stroke-induced paralysis, led him into figure skating. Tyrrell has trained as an ice dancer and was a 5-time national competitor. He has continued his cross training with his studies and performances of jazz, ballet, modern and ballroom dancing. Tyrrell has choreographed and directed shows in Germany, as well as performed on the TV show "Sterren Dansen Op Het IJs" in the Netherlands. Ty is thrilled to be in his 8th season of skating with Ice Theatre.

NICOLETTE AMIE HOUSE (Performer) hails from suburban Chicago, where she became attracted to figure skating when she was still nearly a toddler. Multi-talented and an excellent student, Ms. House began actually studying figure skating at age four, but pursued other interests, as well, including music, acting and tennis. By the time she was 10 years old, however, she dedicated herself to figure skating, eventually earning four United States Figure Skating Association Gold Medals and becoming the Lithuanian National Ice Dance Silver Medalist, and a European and World competitor. Currently, she is pursuing a Bachelor of Science degree in Psychology at Lake Forest College, Lake Forest, Illinois. She also continues to pursue her interests in figure skating and ballroom dancing. This performance marks Nicolette's debut with Ice Theatre.

SUSAN MARSHALL (Choreographer) has created over thirty dance works in collaboration with the dancers of Susan Marshall & Company, including *Cloudless*, *One and Only You*, *The Most Dangerous Room in the House*, *Spectators at an Event*, *Fields of View*, *Arms*, *Interior with Seven Figures*, and *Kiss*. Susan has also created dances for the Lyon Opera Ballet, Frankfurt Ballet, Boston Ballet and Montreal Danse. Her signature aerial duet, *Kiss*, is in the current repertory of Hubbard Street Dance Chicago and Pacific Northwest Ballet. Susan recently provided the stage direction for "Book of Longing", Philip Glass' newest work based on the poetry of Leonard Cohen which is currently touring nationally and internationally. Susan has directed a movie musical for RIPFest and choreographed dances in operas staged for the Los Angeles Music Center and the New York City Opera. A 2000 recipient of a MacArthur Fellowship, Susan has received a Dance Magazine Award, Guggenheim Fellowship, Brandeis University Creative Arts Citation, American Choreographer Award and two NYSCA Fellowships. She is the recipient of three New York Dance and Performance Awards (*BESSIES*) for Outstanding Choreographic Achievement, the first, in 1985, following the company's premiere concert at Dance Theater Workshop, the second, in 1997, for her collaboration with Philip Glass on *Les Enfants Terribles*, and the third, in 2006 for *Cloudless*.

JOANNA MENDEL SHAW (Choreographer) has focused her choreographic work on creative partnerships for dancers and athletes. Her projects include works for gymnasts, in-line skaters, equestrians and ice skaters. Since 1998, JoAnna has developed a performance form that partners dancers with equestrians and their horses. The Equus Projects/Dancing with Horses has gained national recognition for its theatrical fusion of equestrian dressage and dance. JoAnna's ice dance work includes five works for Ice Theatre of New York, the first being *Appalachia Waltz*, co-choreographed with Doug Webster. JoAnna's dance choreography has been commissioned by colleges and universities throughout the country and presented in New York at Dance Theatre Workshop, St. Marks, Joyce SOHO and the 92nd Street Y. She is the recipient of two NEA Choreographic Fellowships. JoAnna has taught on the faculty at University of Washington, NYU/Tisch, Princeton, Mount Holyoke College and Montclair State. She is currently on the faculty at Juilliard and The Ailey School/Fordham. Her international teaching includes residencies in Hungary, Wales and Korea, Switzerland and Scotland.

MOIRA NORTH (Artistic Director/Founder) was designated one of the 25 Most Influential Names in Figure Skating by International Figure Skating Magazine for being a driving force in the development of figure skating as a performing art. She and partner Patrick Dean skated Ice Theatre's first work, a collaboration with dance choreographer Marc Bogaerts, which won them first place in the Professional Championships in Jaca, Spain. In her subsequent work as Artistic Director of Ice Theatre, Moira has continued to integrate the work of dance and performance artists into the repertory of ice choreography and classes. Moira's credits include teaching actress Ileana Douglas to skate for her role in the film *To Die For*; teaching and choreographing a skating scene in the film *The Preacher's Wife* with Whitney Houston and Denzel Washington; choreographing five productions of *Montreal Fashions on Ice* for the Quebec Delegation at Rockefeller Plaza; and choreographing the opening ceremonies for both the National Hockey League All-Stars Game and World Cup Hockey. She also served as creative consultant for Arts & Entertainment's Winter Solstice on Ice.

JAMIE COFFEY REYNOLDS (Performer) is thrilled to be performing with Ice Theatre of New York once again. A three-time National Competitor and featured performer with Disney On Ice, she teaches skating, dance, and theater to youth and adults throughout NYC. Jamie is also an actor, dancer, and yoga practitioner and graduated from NYU Tisch School of the Arts with her MA in Performance Studies in 2007. Jamie re-joined Ice Theatre in the spring of '08 for the performances at the Ice Concert Series and the tour to France. She would like to thank ITNY and her fellow company members for all for all of their support and talent. This performance is dedicated to Boo, Mom and B.

JIRINA RIBBINS (Executive Director) joined the Ice Theatre of New York staff in December 2004, after serving on the Board since the founding of the company. Over the past 20 years Jirina has worked in a variety of positions in the entertainment and sports industries, including as Olympic sports consultant and producer for seven Olympic Winter Games and two Summer Games. In 2002 she was honored with the 2002 Sports Emmy for Outstanding Live Sports Special as Associate Producer with NBC for the Salt Lake City Olympic Winter Games. During her career at Candid Productions (later SFX Sports/Clear Channel Entertainment) she produced and managed televised events worldwide with two-time Olympic Figure Skating Champion Dick Burton. Jirina holds a Master of Arts Degree in Foreign Languages from the State University of Antwerp, Belgium and a coaching certification in figure skating and artistic roller-skating from the Coaches Training Academy in Cologne, Germany. She is fluent in seven languages. Jirina is happily married to Christopher Archer and they reside in Harlem.

CHENAULT SPENCE (Lighting Designer) is renowned throughout the world as lighting designer for opera, ballet and theatre, Alvin Ailey American Dance Theatre, with which he has been a lighting designer for thirty years and the Opera Company of Philadelphia for which he received two Emmy awards for *The Damnation of Faust* and *Un Ballo in Maschera* with Luciano Pavarotti. He is a resident lighting designer for, in addition to The Ice Theatre of New York, Alvin Ailey American Dance Theatre, Dance Brazil, New York Baroque Dance Company and Saeko Ichinohe Dance Company, and the Long Leaf Opera Company. His work has also been seen with Lyon Opera Ballet, Dance Theatre of Harlem, Washington Ballet, Erick Hawkins, Jose Limon, Bat-Dor Dance Company of Israel and The National Ballet of Iran and other opera, theatre and ballet companies throughout the world.

ALYSSA STITH (Performer) was born and raised in West Point, NY and spent the majority of her formative years on the ice as a competitive figure skater. She began dancing in 1996 while touring with Living the Dream Theatre Company and earned her BA with Distinction in Dance from Ohio State University in 2000. Since then she has been striving to translate dance to ice while training and performing in both areas. On the ice, Alyssa has been performing regularly with Ice Theatre of New York since 2000, including the tour to France. She was a principal in Rory Flockhart's *Ebony on Ice! Soul Spectacular on Ice*. Off the ice, she has performed with several modern dance companies. She holds a Masters Degree in dance from New York University. Alyssa currently resides in Denmark.

DOUGLAS WEBSTER (Ensemble Director) is grateful for the life that figure skating has offered him. After 20 years as a skating professional he is continually amazed that there is still so much more to learn and to be inspired by. He is grateful to his parents and family for their constant support and love trusting that he will find his way and maybe someday even have a home—though skating has always been his true home and they probably know it. He would like to dedicate this performance to his Mom, Susan, who is here tonight. Douglas is honored to have worked on the creative teams of Stars On Ice (2008 and 2009), Disney on Ice (the last six shows including High School Musical: The Ice Tour and the most recent Worlds of Fantasy), Holiday on Ice (3 shows), the reality show Sterren Dansen Op Het Ijs in The Netherlands, and The Sun Valley Ice Show. He has created many critically acclaimed pieces for The Ice Theatre of New York including "Departures" and he has had the awakening opportunity to work with many renowned choreographers translating their visions to the ice including: Joanna Mendl Shaw, David Parsons, Ann Carlson, Elisa Monte, Johan Renvall, and Donlin Forman. This week Douglas is excited to head to Germany to choreograph one of his favorite movies "The Wizard of Oz" at the Autostadt Park. Thank you to everyone who has been on my path and a big thanks to Moira North, Jamie Coffey Reynolds, and Jirina Ribbens for all their hard work and dedication to The Ice Theatre of New York and for being supportive of my work. And a huge thank you for the entire cast here tonight. You guys rock!

Ice Theatre New York

Artistic Director/Founder

Moira North

Ensemble Director

Douglas Webster

Executive Director

Jirina Ribbens

Production Associate

Aretha Aoki

Chairman

Michel Mercure

Vice Chairman

William Candee, III

President

Moira North

Secretary

Stacie Young Krinsky

Treasurer

Missy VanBuren

BOARD OF TRUSTEES

Jessica Betts

William Candee, III

Eri Chiang

Chip Connell

Violet Eagan

Joan Erdheim

Alicia Ernst

Kathlin Feuerstein

Mary Gaillard

James Goodale

Ruth Legon

Robert Mellins

Michel Mercure

Moira North

Susan Numeroff

Guy Robinson

Jan Staller

Missy VanBuren

Stacie Young Krinsky

ADVISORY COUNCIL

Elise Bernhardt

Judy Blumberg

Dick Button

Ann Carlson

Jay Colton

Patrick Hourcade

Joseph Koudelka

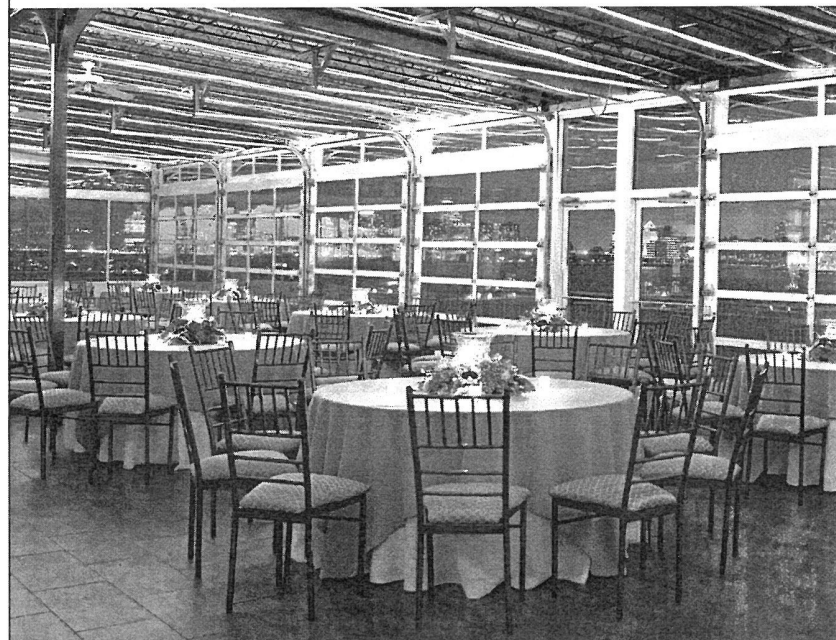
Meredith Monk

Ken Shelley

Douglas Webster

Ice Theatre would like to thank all our patrons, funders
and corporate supporters for their generosity.

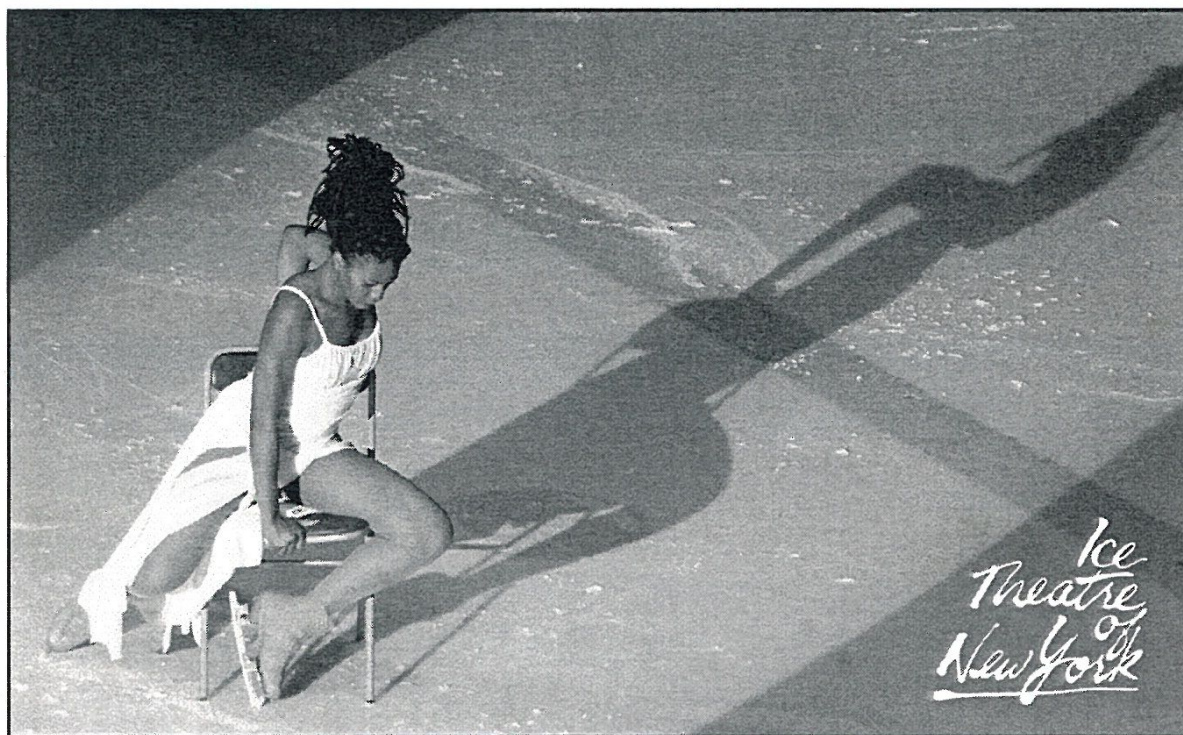
Host your next social event at Sky Rink's **SUNSET TERRACE**



**Holiday Parties • Corporate Outings
Birthday & Anniversary Celebrations
Family or School Reunions
Capacity for up to 300**



**For more information or to book an event, please contact
Keith Fitzpatrick at 212.336.6100 ext. 6151.**



SPECIAL ACKNOWLEDGMENT

to these individuals and others whom we might have missed

Make up for Ice Theatre of New York
provided by MAC Cosmetics

MAC

icenetwork.comSM

Comcast[®]

ALToids[®]

Craig Cichy and MAC Cosmetics

Miriam Chaban, Controller

Robert Dustin and Jirina Ribbens, Video

Charles Kerner, Accountant

Jamie Coffey Reynolds, Grant Writer

Jeffrey Shaw, Computer Technician

April Thibeault, Publicist

Scott H. Schwartz, Graphic Design

Ronnie Talerico
General Manager
Sky Rink

Kenny Moir
Executive Director of Figure Skating
Sky Rink

Jim Bugenhagen
Asst. General Manager
& Director of Hockey
Sky Rink

Maintenance Crew
Hector Vega, Director of Maintenance
Angel Sandoval, Asst. Director of Maintenance
Edwin DeJesus
Michael Reynoso

FUNDERS

Carnegie Corporation
Gertrude Vanderbilt Endowment
Lisa McGraw Figure Skating
Foundation
Robert Sterling Clark Foundation

